

INSTRUCTIONS FOR ORDERING PARTS

All service parts should be ordered through your authorized H&S dealer. He will be able to give you faster service if you will provide him with the following.

1. Model & Serial Number - Both can be located on the front Main Frame.
2. All reference to left or right apply to the machine as viewed from the rear.
3. Parts should not be ordered from illustration only. Please order by complete part number.
4. If your dealer has to order parts - give shipping instructions.

VIA truck - large pieces (please specify local truck lines)

VIA United Parcel Service (include full address)

H&S Mfg. Co.	
MARSHFIELD, WIS.	
MOD. NO.	<input type="text"/>
SER. NO.	<input type="text"/>

PLEASE RECORD NUMBERS FOR YOUR UNIT FOR QUICK REFERENCE

ABOUT IMPROVEMENTS

H&S IS CONTINUALLY STRIVING TO IMPROVE IT'S PRODUCTS.

We must therefore, reserve the right to make improvements or changes whenever it becomes practical to do so, without incurring any obligation to make changes or additions to the equipment previously sold.

DECAL LOCATION

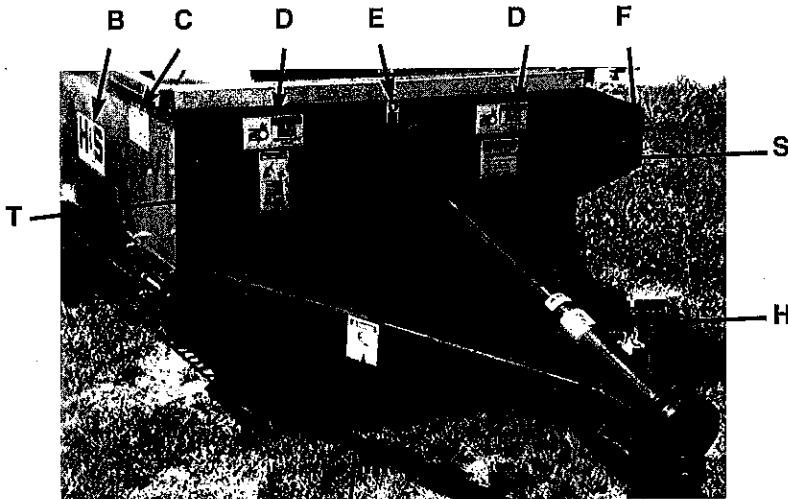
Your H&S Manure Spreader was manufactured with operator safety in mind. Located on the manure spreader are various decals to aid in operation, and warn of danger or caution areas. Pay close attention to all the decals on your Manure Spreader.

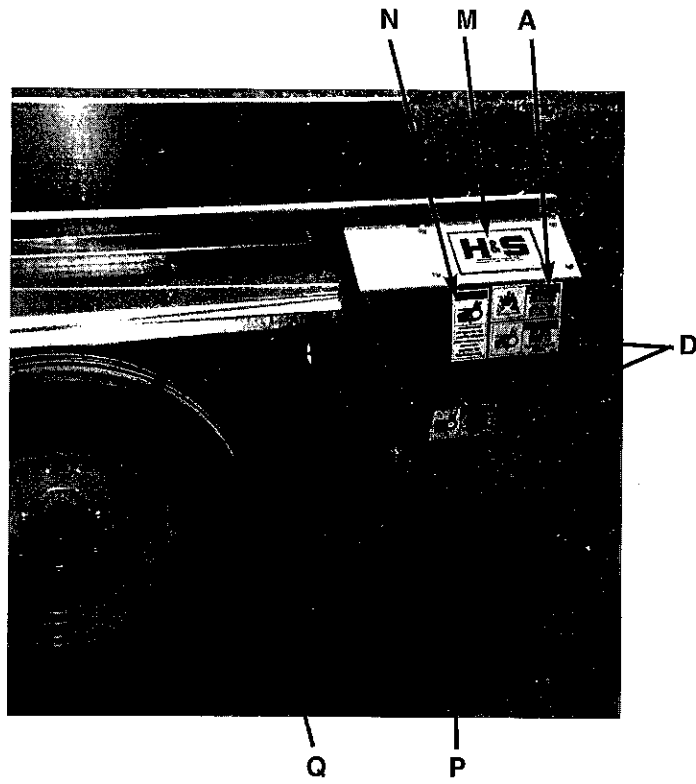


DO NOT REMOVE ANY OF THESE DECALS. IF DECALS ARE LOST, DAMAGED, OR IF FORAGE BOX IS REPAINTED, REPLACE DECALS. REMEMBER: DECALS ARE FOR YOUR PROTECTION AND SAFETY.

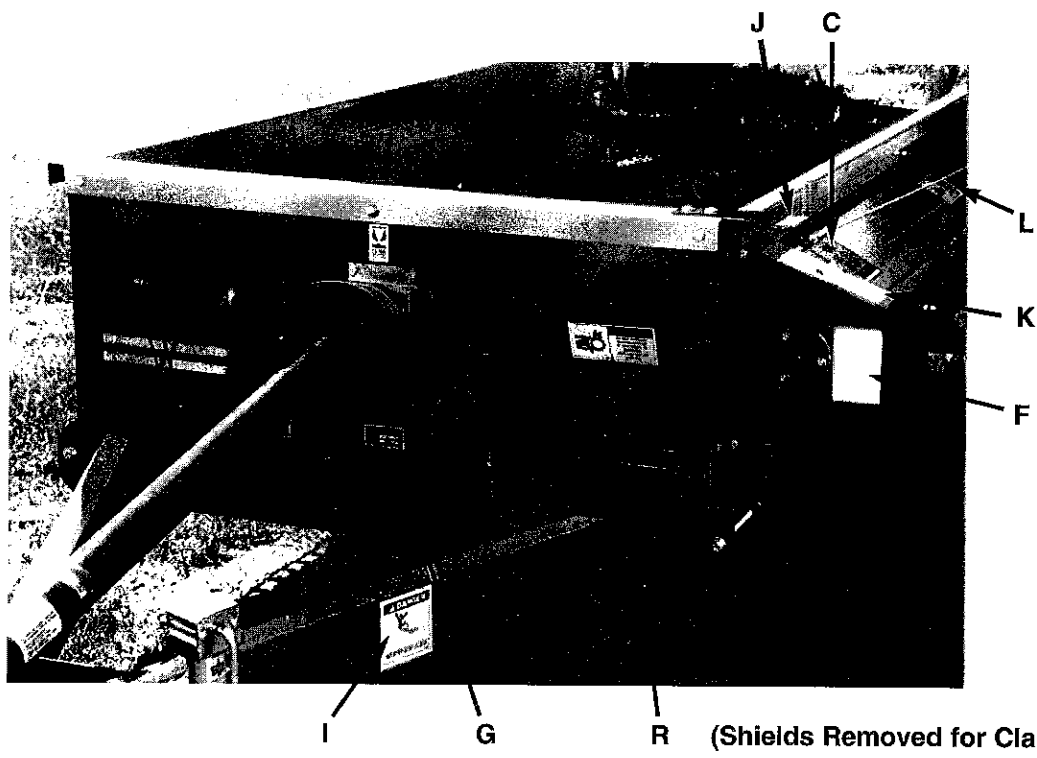
Listed below are the decals on your Manure Spreader. These decals may be ordered individually by part number or by ordering a complete set.

ITEM	PART NO.	DESCRIPTION
A	111593A	(2) Danger - Stay Clear of Beater
B	71188	H&S Decal (6x12)
C	H71294	(2) Model 80
D	1494B	(4) Warning - Do Not Remove Shields
E	FEMA	
F		Amber Reflector
G		Serial Number
H	Weasler	Danger - Rotating Driveline (H&S Decal 1494L)
I	9194A	(2) Danger - No Step
J	714-3189	Beater Disengage - Clean Out
K	1494K	Warning - Do Not Remove Shields
L	12794	Warning - Do Not Remove Shields
M	B10	H&S Decal (5x8)
N	1494J	Warning - Do Not Clean
O		Red Reflector
P	3894	Warning - Do Not Operate
Q	71494A	(2) Warning - Do Not Operate
R	1494A	Warning - Do Not Operate
S	5896A	Warning - Help Avoid Injury
T	9194B	Danger - Never Allow Riders
	80-91698	Complete Set of Decals
Paint - H & S Red		
	ZX21	Gallon
	ZX22	Quart
	ZX23	Pint



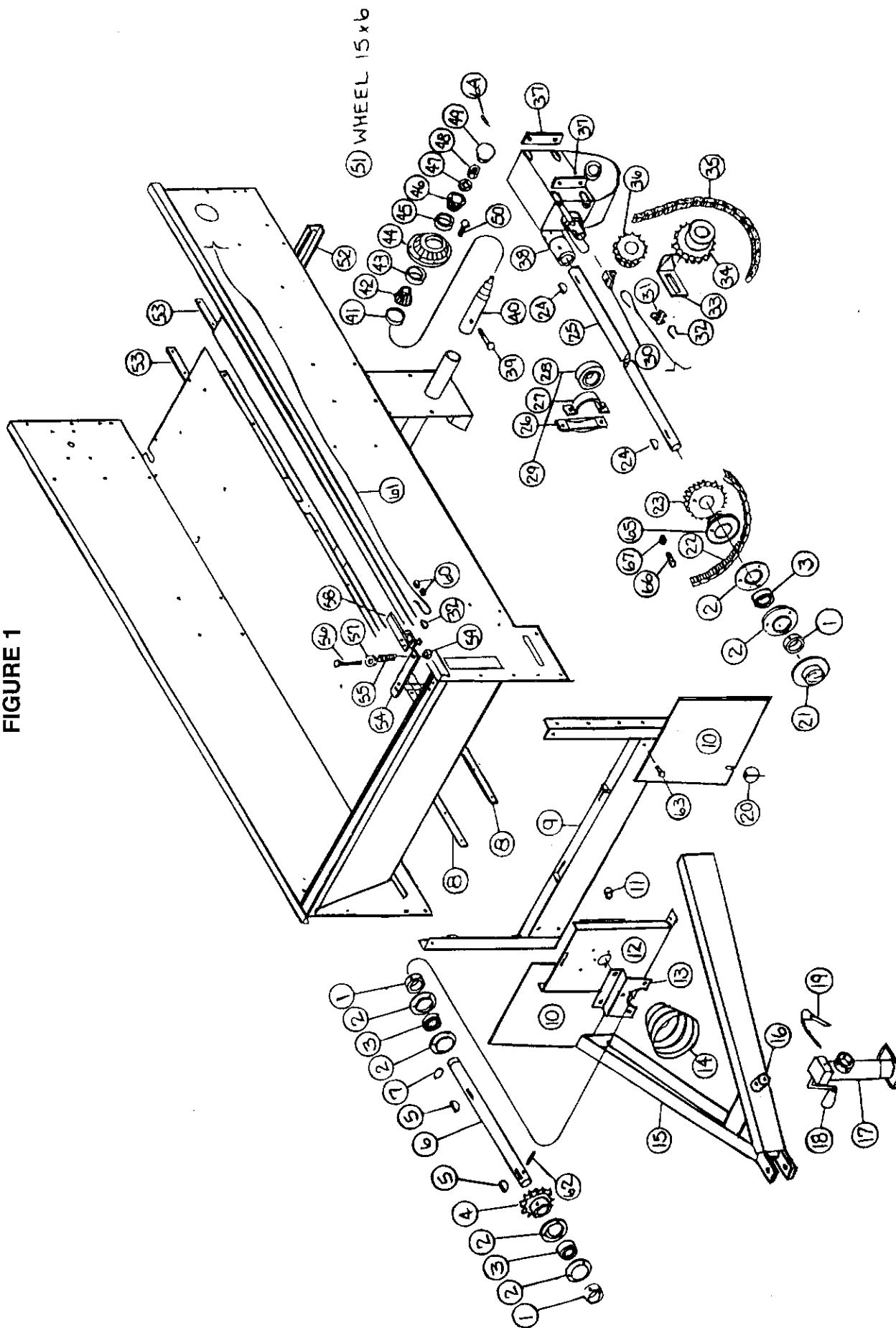


(Located Behind Shields)



(Shields Removed for Clarity)

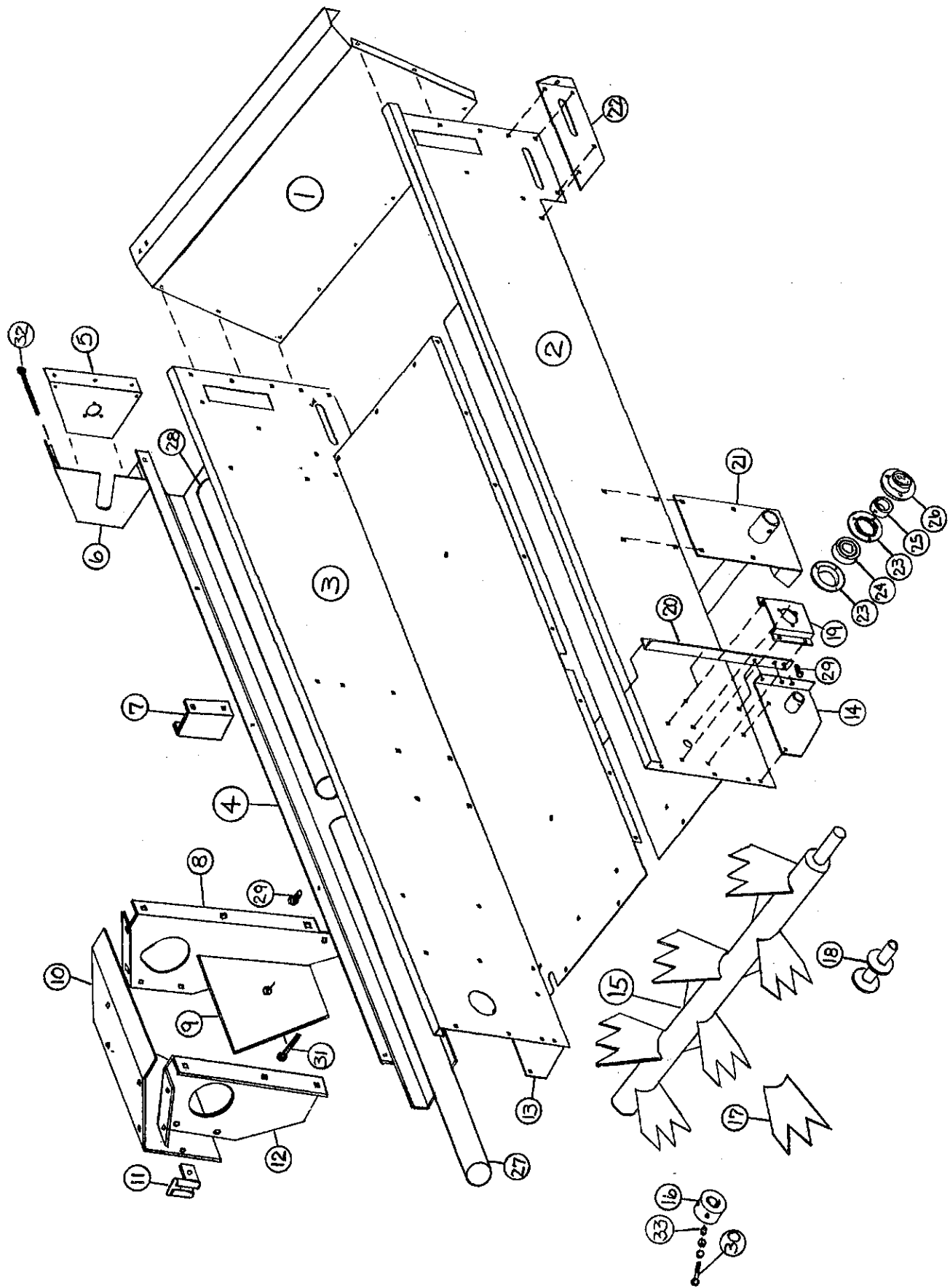
FIGURE 1



**FIGURE 1
COMPONENT PARTS**

ITEM	PART NO.	DESCRIPTION
1.	4C9	Lock Collar
2.	4C7	Flange
3.	4C8	Bearing
4.	4C4	Input Sprocket 13T
5.	5B10	Key 1/4" x 1"
6.	80N7	Input Shaft
7.	3G21	Snap Ring
8.	80N8	Front Floor Brace
9.	80N9	Front Frame
10.	80N10	Front Poly Shields
11.	80N11	Front Post Spacer
12.	80N12	Front Post
13.	80N13	Center Bearing Bracket
14.	17G45	Implement Yoke Shield
15.	80N14	Pole Assembly
16.	12N14	Jack Mount
17.	12N11	Jack
18.	12N12	Jack Handle
19.	12N13	Jack Pin & Chain
20.	F56	Linchpin
21.	80N15	Shaft Guard
22.	80N16	#50 Roller Chain - 118 Pitches
23.	X141	40T Sprocket
24.	5B10	Key 1/4" x 1"
25.	80N18	Side Shaft
26.	80N19	Bearing Cover
27.	80N20	Bearing Holder
28.	80N21	Bearing
29.	80N22	Bearing Assembly
30.	80N23	Shifter Angle
31.	BFR220	Cable Clamp
32.	ES4	Thimble
33.	80N24	Chain Tightener
34.	ST28	24T Sprocket
35.	80N25	#50 Roller Chain - 50 Pitches
36.	80N26	17T Sprocket
37.	80N27	Gearbox Mounting Spacer
38.	80N28	Coupler
39.	16SV91	Spindle Bolt
40.	12N16	Spindle
41.	12N17	Seal
42.	12N18	Inner Bearing
43.	12N19	Inner Race
44.	12N20	Hub
45.	12N21	Outer Race
46.	12N25	Outer Bearing
47.	B4	Washer
48.	B3	Nut
49.	12N23	Dust Cap
50.	12N22	Hub Bolt
51.	RG127	Wheel 15 x 6
52.	80N29	Back Cross Beam
53.	80N30	Back Floor Brace
54.	80N31	Beater Shut-Off Bracket
55.	5B6	Spring
56.	12N51	Bolt 3/8" x 2-3/4" GR.5
57.	X67	Washer 3/8"
58.	12N48	Shifter Bracket
59.	K93	Lock Nut 3/8"
60.	ES5	Cable Clamp
61.	80N33	Cable
62.	3G22	Roll Pin 5/16" x 1-3/4"
63.	R10	Bolt 1/2" x 1-1/4" GR.5
64.	B31	Cotter Pin
65.	80N74	Shear Hub
66.	D31	Shear Bolt 5/16" x 1-1/2" GR.2
67.	D81	Lock Nut 5/16"

FIGURE 2



**FIGURE 2
FRAME, BEATER & SHIELDS**

ITEM	PART NO.	DESCRIPTION
1.	80N34	Front Panel
2.	80N35	Right Spreader Side
3.	80N36	Left Spreader Side
4.	80N37	Side Shaft Shield
5.	80N38	Front Side Shield Cover
6.	80N39	Front Side Shield
7.	80N40	Side Bearing Mount
8.	80N41	Front Gearbox Mount
9.	80N42	Apron Drive Shield
10.	80N43	Gearbox Mounting Cover
11.	80N44	SMV Bracket
12.	80N45	Rear Gearbox Mount
13.	80N46	Apron Shaft Bracket LH
14.	80N47	Apron Shaft Bracket RH
15.	80N73	Beater
16.	80N49	Beater Insert
17.	80N50	Beater Blade
18.	80N51	Stub Shaft
19.	80N52	Beater Bearing Mount
20.	80N53	Right Side Brace
21.	80N54	Axle Assembly
22.	80N55	RH Apron Chain Tightener
*	80N56	LH Apron Chain Tightener
23.	4C7	Flange
24.	4C8	Bearing
25.	4C9	Lock Collar
26.	80N15	Bearing Cover
27.	80N32	Front PVC Guard
28.	80N69	Back PVC Guard
29.	R10	Bolt 1/2" x 1-1/4" GR.5
30.	X111	Bolt 3/8" x 1" GR.5
31.	80N70	Bolt 3/8" x 3-1/2" Carr. Bolt GR.2
32.	80N71	Bolt 3/8" x 5" GR.2
33.	80N72	Beater Bolt Spacer

NOTE: * (Means Not Shown)

FIGURE 3

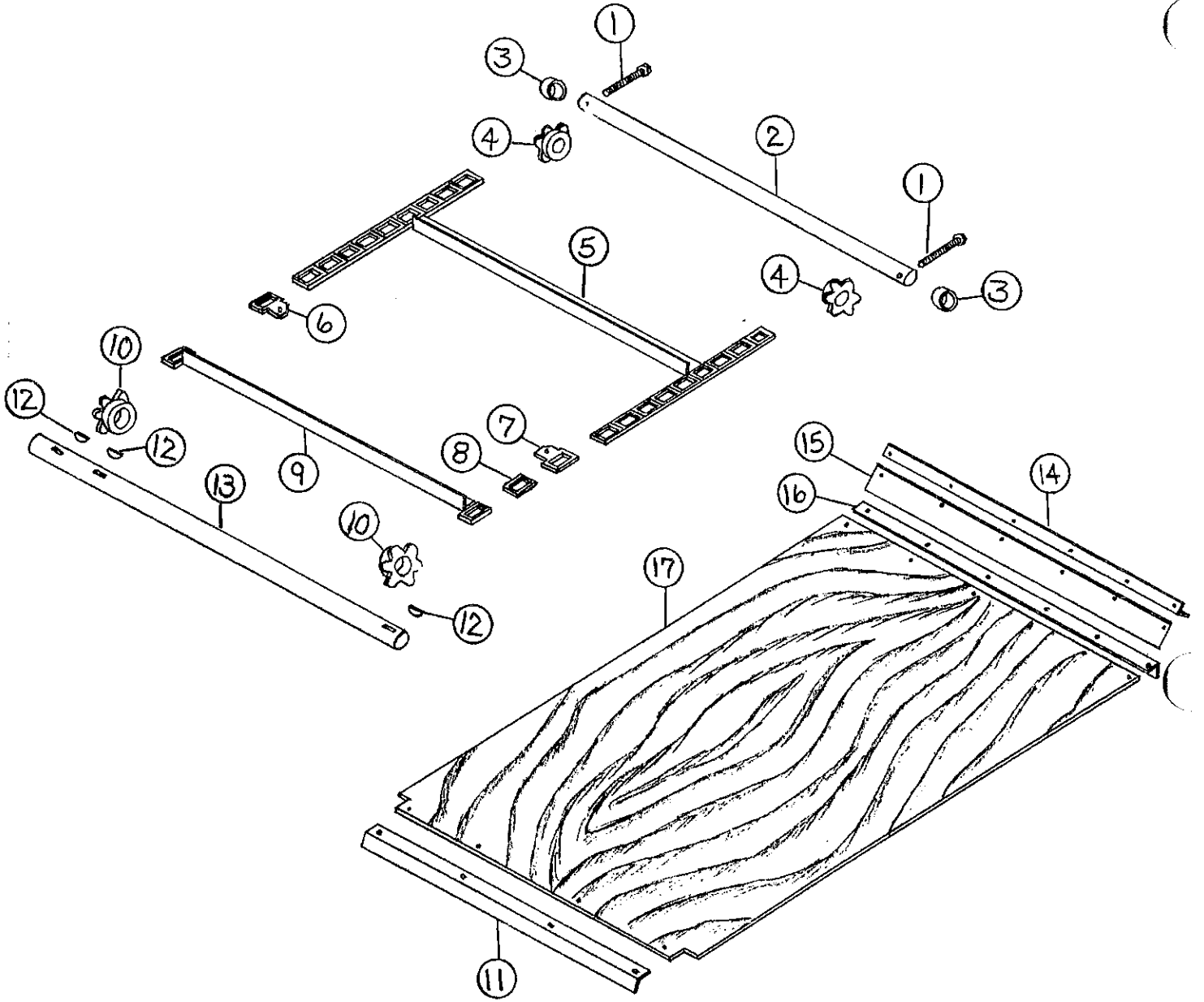


FIGURE 3
APRON, CHAIN, SHAFTS & FLOOR

ITEM	PART NO.	DESCRIPTION
1	A7	Idler Shaft Bolt
2	12N67	Idler Shaft
3	12N66	Spacer
4	12N65	Idler Sprocket
5	80N58	Apron Chain
6	11S23	Att. Link LH 67H
7	11S24	Att. Link RH 67H
8	11S25	Connector Link 67H
9	80N62	Slat W/Att. Link
10	80N63	Apron Drive Sprocket 6T
11	80N64	Rear Floor Brace
12	G12	Key
13	80N65	Apron Drive Shaft
14	80N66	Front Rubber Strap
15	12N69	Front Rubber
16	80N67	Front Floor Brace
17	80N68	Floor Plywood

FIGURE 4

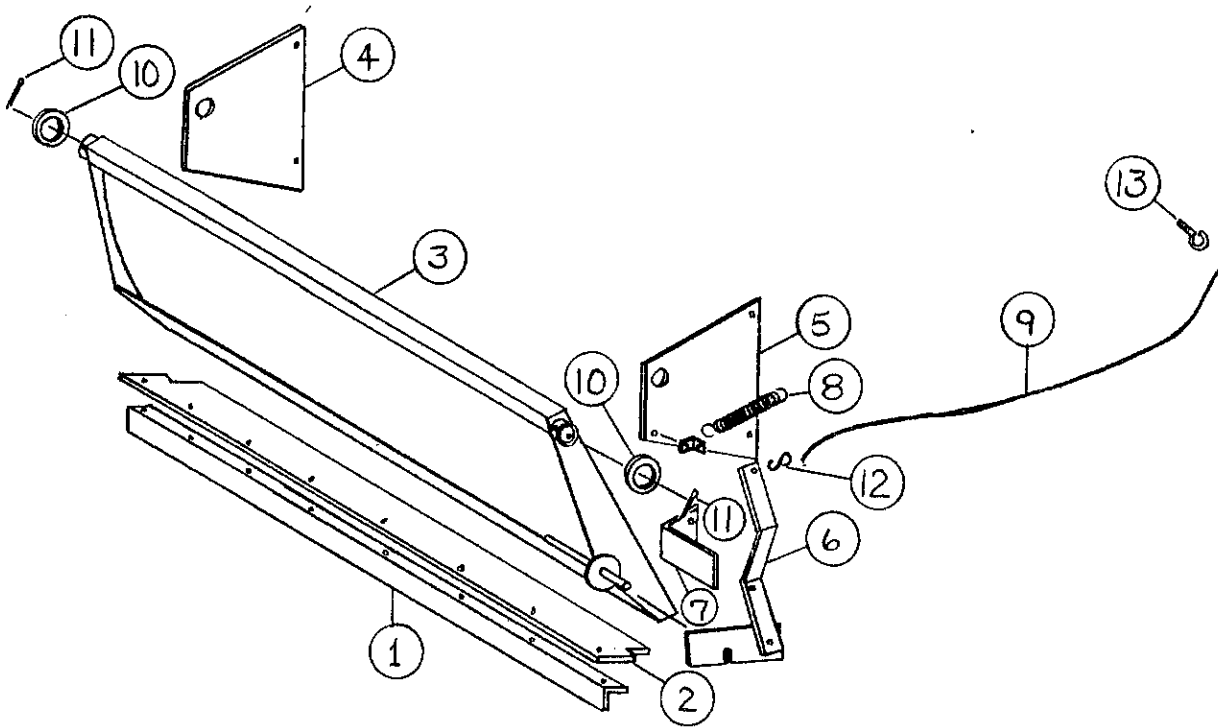


FIGURE 4

**OPTIONAL PAN
80 BUSHEL SPREADER**

ITEM	PART NO.	DESCRIPTION
1	12N52	Pan Angle
2	12N53	Pan Rubber
3	80N1	Pan
4	80N2	LH Pan Plate
5	80N3	RH Pan Plate
6	80N4	Pan Handle
7	80N5	Pan Handle Stop
8	R27	Pan Handle Spring
9	80N6	Trip Rope
10	R3	Pan Spacer
11	R70	Cotter Pin
12	R31	"S" Hook
13	23N213	"I" Bolt

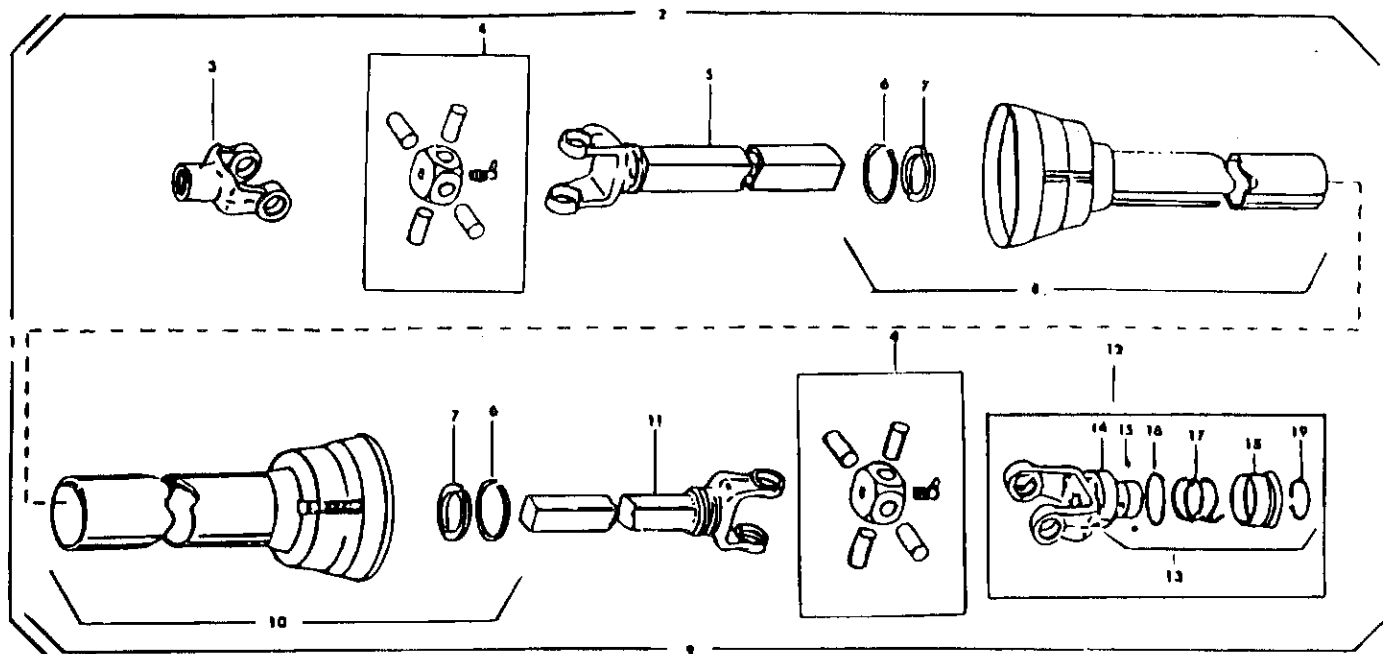


FIGURE 5

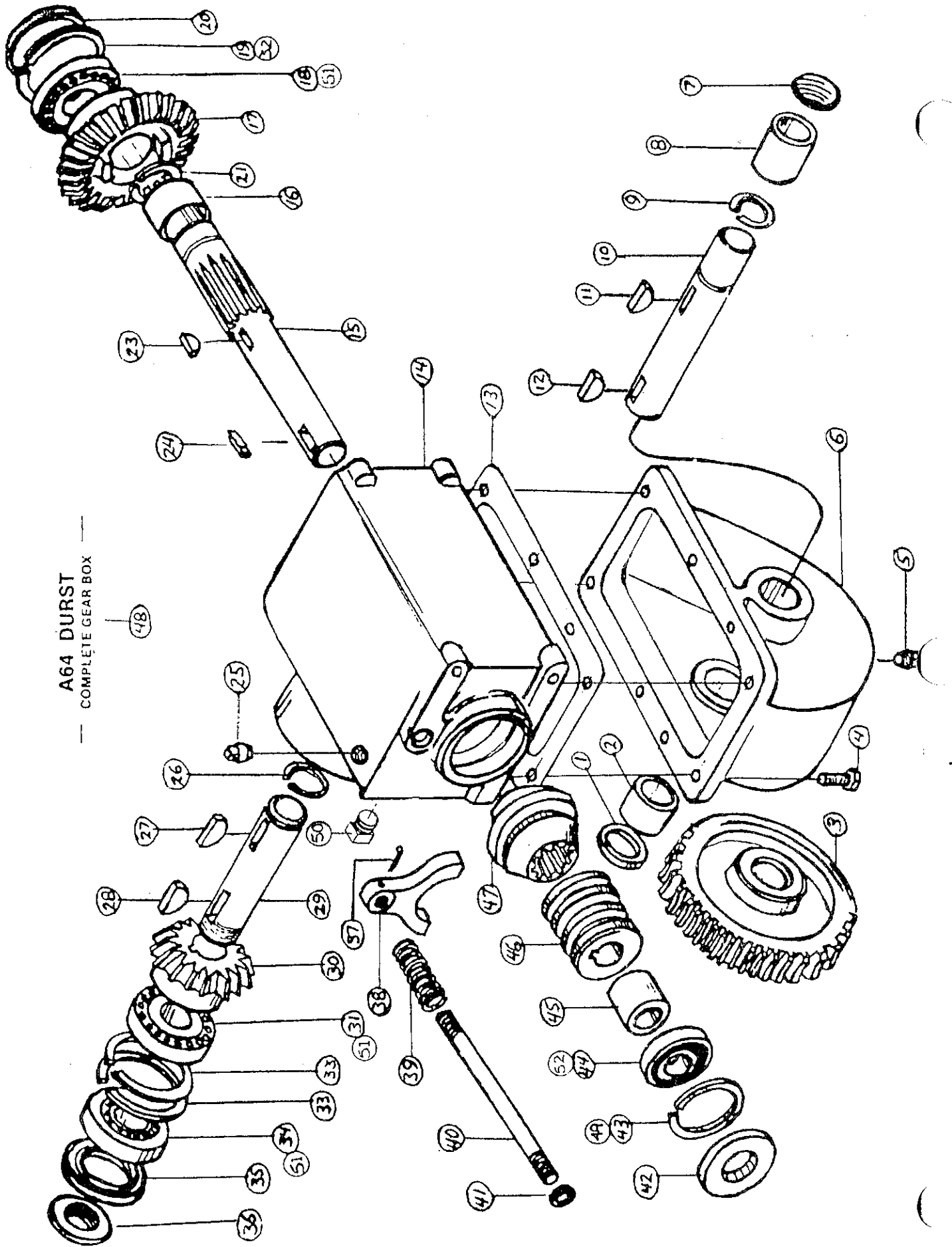
PTO PARTS

ITEM	PART NO.	DESCRIPTION
1.	T189	"W" Universal Joint Telescoping PTO Assembly with Guard
2.	T190	Machine Half PTO
3.	31WX198	End Yoke
4.	"W" Kit	Repair Kit
5.	7D426/ W1N3	Yoke and Tube
6.	24N26	Bearing Retainer
7.	S206	Nylon Bearing
8.	T191	Inner Guard Inc. Item #6 & #7
9.	S208	Joint & Shaft Half with Guard
10.	S209	Outer Guard Inc. Item #6 & #7
11.	W1N1/ 9D440	Yoke and Shaft
12.	S224	Lock Yoke Assembly
13.	S225	Spring Lock Repair Kit
14.	S226	Cover
15.	S212	Stainless Ball
16.	S227	Washer
17.	S228	Spring
18.	S229	Collar Assembly
19.	S215	Retaining Ring
Not Shown	S402	PTO Safety Manual

FIGURE 6

A64 DURST

COMPLETE GEAR BOX



**FIGURE 6
MODEL 80
GEARBOX**

ITEM	PART NO.	DESCRIPTION
1.	G1	Seal
2.	G2	Bushing
3.	G3	36T Gear
4.	G4	Capscrews (8)
5.	G5	Drain Plug
6.	G6	Gear Housing - Lower
7.	G7	Expansion Plug
8.	G2	Bushing
9.	G9	Snap Ring
10.	G10	Low Speed Output Shaft
11.	G11	1/4" x 1-1/8" Key
12.	G12	5/16" x 1" Key
13.	G13	Gasket
14.	G14	Gear Housing - Top
15.	G15	Shaft
16.	G16	Bushing
17.	G17	24T Gear
18.	G18	Bearing
19.	G55	Snap Ring
20.	G20	Cap
21.	G9	Snap Ring
23.	G22	1/4" x 7/8" Key
24.	G23	5/16" x 1-1/4" Square Key
25.	G24	Plug-Vent
26.	G25	Snap Ring
27.	G26	3/8" x 1-1/4" Key (Hardened)
28.	5B9	3/8" x 1-1/4" Key
29.	G28	Hi-Speed Output Shaft
30.	G29	16T Gear
31.	G53	Bearing
32.	G69	Shim (When Needed)
33.	G55	Snap Ring (2)
34.	G33	Bearing
35.	G34	Seal
36.	G35	Stake Nut
37.	G95	1/8" x 1-1/2" Cotter Key
38.	G37	Yoke
39.	G38	Spring
40.	G39	Clutch Rod
41.	G40	Seal
42.	G41	Seal
43.	3G19	Snap Ring
44.	L3G24	Bearing
45.	G44	Spacer Ring
46.	G45	Worm
47.	G46	Clutch 18T Spline
48.	D7	Gearbox Complete
49.	G92	Shim (When Needed)
50.	G87	Plug 1/8"-27 NPT
51.	G54	Race
52.	3G18	Race

- SERVICE NOTES -

Lined area for service notes.